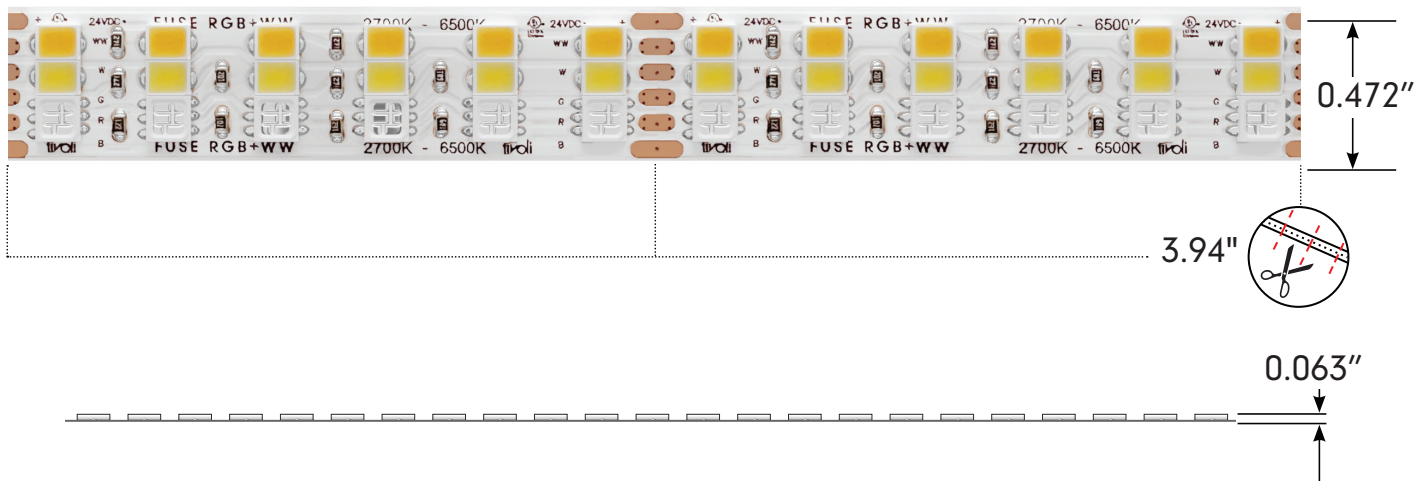


Project: \_\_\_\_\_ TYPE: \_\_\_\_\_

- 5 Channel system
- RGB mixing with two dedicated white chip - available CCTs: 2700K / 6500K
- 36 LEDs per foot
- 2" Cutting increments
- 3M VHB double sided tape on the back
- 24VDC input voltage
- Includes Tivoli's eXo shield coating
- Factory soldered lead wire
- Standard IP54 damp rated and IP67 wet location available
- Multiple mounting channel options
- Low lead times
- 3oz. Copper Trace
- 5 Year warranty

**Dimensions**



## Order Specification Guide

PRODUCT CODE	INSTALL	LED TYPE	LED WW COLOR	*MAX RUN	VOLTAGE
<b>TPLFS</b>	<b>I</b>	<b>RGB</b>	<b>01</b>		<b>24</b>
<b>TPLFS</b> = Fuse Tape	<b>I</b> = Indoor	<b>RGB</b> = RGB mixing	<b>01</b> = 27K - 65K	<b>MR</b> = Max Run	<b>24</b> = 24V DC

\* Optional - Leave blank if not needed

Note: A layout/drawing must accompany each order showing run length and location

Note: Runs with LEAD-C are rounded **up** to next cut interval (unless otherwise specified)

Note: Runs with LEAD-D are rounded **down** to next cur interval (unless otherwise specified)

## Specification

Output						
Kelvin Temperature	Red	Green	Blue	RGB	2700K	6500K
Lumens/ft	24.8	80.1	22.1	126	202	239
Efficacy (Lm/W)	41	111	35	62	101	117
CRI	n/a	n/a	n/a	CF	98	94
Wavelength	627	527	471	n/a	n/a	n/a
Measured Power W/ft	0.60	0.72	0.62	2	2	2
Listed Power W/ft.	6					
Max Run	15'					

n/a = Not Applicable

Electrical	
Input Voltage	24V DC
Control System	DMX
Physical	
Dimensions	0.472" (12mm)
LED	3535 (RGB), 2835 (WW)
Cut Increment	2" (50.8mm)
LED/ft	36
Copper Trace	3 OZ
Adhesive	3M VHB Tape
Operating Temperature	-40°C to 60°C (-40°F to 140°F)
Certification and Testing	
Certification	cULus
Environment	Damp Location
IP Rating	IP54 (Conformally Coated)
Warranty	5 years

Power Leads and Jumpers (Installed by Tivoli's certified solderers)



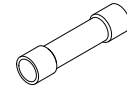
**TPL-I-LEAD-6-C**  
LEAD/END  
24" standard 6 conductor  
22AWG lead wire factory  
attached to one end of tape



**TPL-I-LEAD-6-D**  
LEAD/LEAD  
24" standard 6 conductor  
22AWG lead wire factory  
attached to both ends of tape

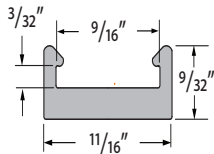


**TPL-I-XEP-6**  
EXTRA LEAD WIRE  
Additional factory attached  
22AWG lead 6 wire to extend  
lengths of LEAD-C and LEAD-D  
up to 20 ft. max  
Sold per foot

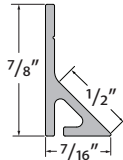


**TPL-I-CONN**  
18-22AWG BUTT CONNECTORS  
Used to interconnect factory  
attached lead wires.  
Sold individually.

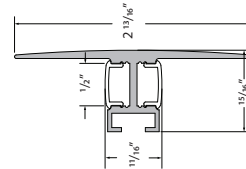
Compatible Extrusions



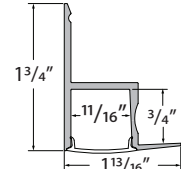
**MCHAN-8-LP**  
Low profile NO LENS OPTION  
clear polycarbonate, length 8'



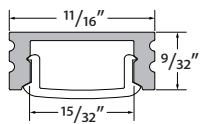
**TPL-I-45-MCH-8-S**  
White PVC, 45° NO LENS  
length 8'



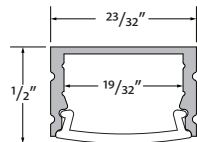
**DWAR-CHAN-SLV-6.5**  
Anodized Aluminum Extrusion,  
available in 6.5' lengths



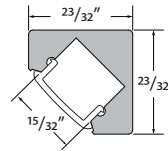
**EDGE-CHAN-SLV-6.5**  
Anodized Aluminum Extrusion,  
available in 6.5' lengths



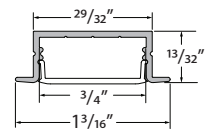
**MINI-CHAN-SLV-6.5**  
Anodized Aluminum Extrusion,  
available in 6.5' lengths



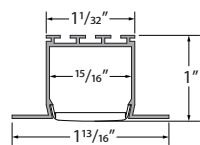
**MOFT-CHAN-SLV-6.5**  
Anodized Aluminum Extrusion,  
available in 6.5' lengths



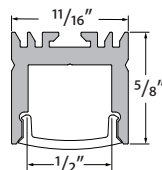
**DYER-CHAN-SLV-6.5**  
Anodized Aluminum Extrusion,  
available in 6.5' lengths



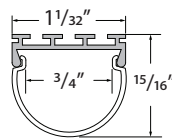
**WRNR-CHAN-SLV-6.5**  
Anodized Aluminum Extrusion,  
available in 6.5' lengths



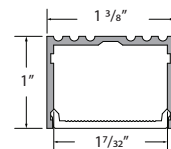
**NOYS-CHAN-SLV-6.5**  
Anodized Aluminum Extrusion,  
available in 6.5' lengths



**VALN-CHAN-SLV-6.5**  
Anodized Aluminum Extrusion,  
available in 6.5' lengths

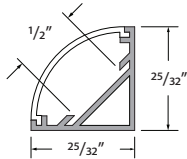


**DOME-CHAN-SLV-6.5**  
Anodized Aluminum Extrusion,  
available in 6.5' lengths

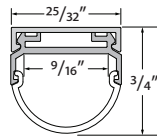


**ALTN-CHAN-SLV-6.5**  
Anodized Aluminum Extrusion,  
available in 6.5' lengths

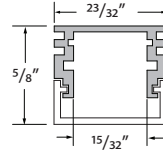
## Compatible Extrusions



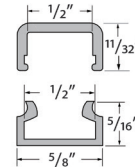
**MRSL-CHAN-SLV-6.5**  
Anodized aluminum extrusion available in 6.5' length



**HRIZ-CHAN-SLV-6.5**  
Anodized aluminum extrusion available in 6.5' length

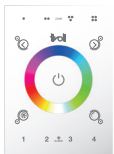


**ASTR-CHAN-SLV-6.5**  
Anodized aluminum extrusion available in 6.5' length



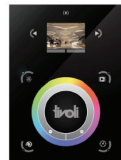
**INF-X-CHAN-8**  
X = C (clear), F (frosted)  
PC extrusion, available in 8' lengths

## In-Wall Controls



Touchscreen

**TVOQ-1-WH**  
White



Touchscreen

**TVOQ-10-XX-7**  
XX = BK (Black), WH (White)



Touchscreen

**TVOQ-2-BK**  
Black

## Power Supplies

### ADUL - DMX SINGLE ADDRESS

DESCRIPTION	CAT NO	APPLICATION	PRIMARY VOLTAGE	SECONDARY VOLTAGE	CIRCUIT BREAKERS	MAX LOAD	CIRCUIT CAPACITY
ADUL Series Class 2 Transformer	ADUL-120-1-4-24-DIN	Indoor / Outdoor	100-277V AC 50/60 Hz	24V DC	1	96W	4A
	ADUL-240-2-4-24-DIN				2	2x96W	2x4A
	ADUL-320-3-4-24-DIN				3	3x96W	3x4A

### ADUL - DMX MULTI ADDRESS

DESCRIPTION	CAT NO	APPLICATION	PRIMARY VOLTAGE	SECONDARY VOLTAGE	CIRCUIT BREAKERS	MAX LOAD	CIRCUIT CAPACITY
ADUL Series Class 2 Transformer	ADUL-240-2-4-24-DIN-2	Indoor / Outdoor	100-277V AC 50/60 Hz	24V DC	2	2x96W	2x4A
	ADUL-320-3-4-24-DIN-3				3	3x96W	3x4A

### ADNM - DMX/DALI FLICKER-FREE FOR TV STUDIO

DESCRIPTION	CAT NO	APPLICATION	PRIMARY VOLTAGE	SECONDARY VOLTAGE	CIRCUIT BREAKERS	MAX LOAD	CIRCUIT CAPACITY
ADNM Series Class 2 Transformer	ADNM-120-1-4-24-DTV	Indoor / Outdoor	100-277V AC 50/60 HZ	24V DC	1	1x96W	1x4A
	ADNM-240-2-4-24-DTV				2	2x96W	2x4A
	ADNM-320-3-4-24-DTV				3	3x96W	3x4A

## Accessories



DMX-SPLT-8  
DMX Splitter  
8 ports of DMX 512, RJ45 and 3-pin  
Hardwire Connection

## Software



Cue™ and CuePro™ softwares are specifically designed for the TivoCUE™ in-wall DMX controls and includes an array of tools required by the latest DMX lighting fixtures. Intuitive, with easy-to-use effects that can be dropped into timelines, and multi-zone synchronization capabilities allow you to program a project effortlessly.